



Shirley Jean Farmer

June 11, 1938 - September 19, 2017

Shirley Jean Farmer, 79 year old resident of Siloam Springs, Arkansas, passed September 19, 2017 at Siloam Springs, Arkansas. Born June 11, 1938 in Farmington, Arkansas, she was the daughter of Floyd Harrelson and Elpha Burris Harrelson. Shirley lived most of her life in Siloam Springs and Watts, Oklahoma. She married Thomas Farmer in Siloam Springs. Shirley worked for Simmons Foods and Franklin Electric for many years.

She was preceded in death by her parents, Floyd and Elpha Harrelson; her husband, Thomas Farmer; three sisters: Thelma, Leyan, and Glenda; and one brother, John Harrelson.

She is survived by three daughters, Cliffie Dozier and husband Jerry of West Siloam Springs, Oklahoma, Debbie Vaughan and husband Kenneth of Kansas, and Dayla Stahl and husband Bill of Bella Vista, Arkansas; seven grandchildren: Anthony Rye, Joshua Rye, Moriah Racheal Gutierrez and husband David, Nathan Vaughan, Blake Vaughan, Tayla Rae McCully and husband Chris, and Ali Philpott; great grandchildren: Laken Gutierrez, Ethan, Avery and Sylis Vaughan, Maddy, Peyton and Emma McCully; two brothers, Don Harrelson and Roy Harrelson; three sisters, Juanita, Ina, and Bobbie; four step children, numerous step grandchildren, and numerous step great grandchildren.

Funeral services will be 3:00 p.m., Monday, September 25, 2017 at Wasson Funeral Home, Siloam Springs, Arkansas. Burial will follow at Bell Cemetery in Watts, Oklahoma. Visitation will be from 4:00 p.m. to 6:00 p.m., Sunday, September 24, 2017 at Wasson Funeral Home, Siloam Springs.

Cemetery Details

Bell Cemetery

Bell Cemetery
Watts, OK

Previous Events

Visitation

SEP **24**. 4:00 PM - 6:00 PM (CT)

Wasson Funeral Home
441 U.S. 412
Siloam Springs, AR 72761
(479) 524-5131
wasson@wassonfuneralhome.com
<https://www.wassonfuneralhome.com>

Service

SEP **25**. 3:00 PM (CT)

Wasson Funeral Home
441 U.S. 412
Siloam Springs, AR 72761
(479) 524-5131
wasson@wassonfuneralhome.com
<https://www.wassonfuneralhome.com>

Tribute Wall

JF

“ *Many great memories of time spent at Tom and Shirley's when we were kids. She was a sweetheart and always so funny.* ”



Jan Farmer-Russell - September 26, 2017 at 07:23 PM



“ *We at the Siloam Springs Senior Activity Center were honored to provide Meals on Wheels to Shirley. All our volunteers who delivered to her loved her! She was so upbeat and took an interest in everyone. She had a one of a kind sing-songy voice that just made you happy. She will be so missed by so many. Our condolences to the family.* ”

Debi Morrison-Holroyd - September 26, 2017 at 03:56 PM

LS

“ *LaWanna Shelley lit a candle in memory of Shirley Jean Farmer* ”



LaWanna Shelley - September 25, 2017 at 03:26 PM

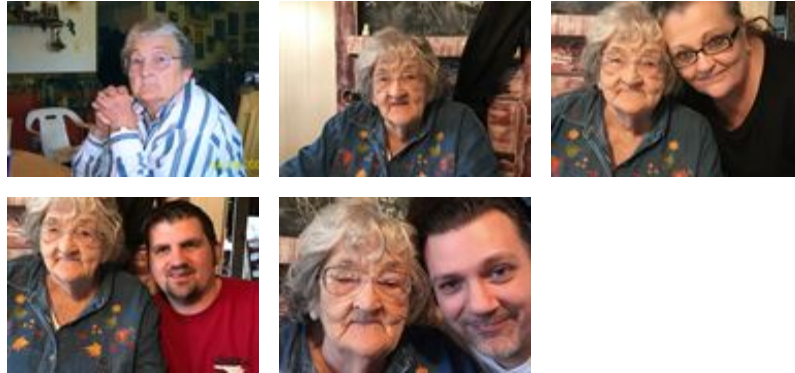
TR

“ *Shirley and Tom were my neighbors years ago. Shirley was always full of laughter and fun to talk to. I am sorry for the family's loss.* ”

Tom Roberts - September 24, 2017 at 07:14 PM



“ 74 files added to the album Life Tributes



Wasson Funeral Home - September 24, 2017 at 02:41 PM



“ Heartfelt Memories was purchased for the family of Shirley Jean Farmer.



September 23, 2017 at 12:34 PM



“ Lavender Reflections Spray was purchased for the family of Shirley Jean Farmer.



September 22, 2017 at 10:37 PM



“ *Emerald Garden Basket was purchased for the family of Shirley Jean Farmer.*



September 21, 2017 at 02:34 PM



“ *Beautiful in Blue was purchased for the family of Shirley Jean Farmer.*



September 21, 2017 at 09:52 AM



“ *She was a very loving and caring aunt that never met a stranger but loved everyone that she came in contact with especially her family and friends we will miss you Carrie Stout daughter Linda Stout Newell*

Linda Stout Newell - September 21, 2017 at 07:45 AM



“ *Linda Stout Newell lit a candle in memory of Shirley Jean Farmer*



Linda Stout Newell - September 21, 2017 at 07:38 AM