



## Kray Barrie Flesner

March 12, 1966 - February 15, 2019

Kray Barrie Flesner, 52 of Gentry, Arkansas, died February 15, 2019 at his home. Born March 12, 1966 in Marshall, Minnesota, he was the son of Kenneth Flesner and Rae Ann Penke Flesner. Kray married Theresa Lorraine Fry on June 4, 1994. He worked for Pipelife Jet Stream as an industrial mechanic and was a member of Gentry Church of Christ.

Survivors include his wife Theresa of the home; children Jessica Sims and husband Beau of Sulphur Springs, Arkansas, Allison Jordan and husband Dusty of Henderson, Texas, Kristen Flesner of Gentry, Arkansas, Kaven Flesner of Gentry, Arkansas and Kruz Flesner of Gentry, Arkansas; six grandchildren Owen, Lauren, Warren, Gwen and Evelyn Sims and Miles Jordan; his parents Kenneth and Rae Ann Flesner of Milroy, Minnesota; sisters Keni Hylbak and husband Ken of Circle Pines, Minnesota and Kari LaPanta of Prior Lake, Minnesota and brother Kyle Flesner and wife Lynn of Farwell, Minnesota.

Funeral service will be 2:00 p.m., Wednesday, February 20, 2019, at Wasson Memorial Chapel, Siloam Springs, Arkansas. Burial will follow at Gentry Cemetery, Gentry, Arkansas. Visitation will be 5:00 p.m. to 7:00 p.m., Tuesday, February 19, 2019 at Wasson Funeral Home, Siloam Springs, Arkansas. A memorial fund has been set up at Grand Savings Bank, Gentry, Arkansas.

# Cemetery Details

## Gentry Cemetery

Gentry Cemetery  
Gentry, AR 72734

# Previous Events

## Visitation

FEB **19**. 5:00 PM - 7:00 PM (CT)

Wasson Funeral Home  
441 U.S. 412  
Siloam Springs, AR 72761  
(479) 524-5131  
wasson@wassonfuneralhome.com  
<https://www.wassonfuneralhome.com>

## Service

FEB **20**. 2:00 PM (CT)

Wasson Funeral Home  
441 U.S. 412  
Siloam Springs, AR 72761  
(479) 524-5131  
wasson@wassonfuneralhome.com  
<https://www.wassonfuneralhome.com>

# Tribute Wall

JO

“ Kenny & Rae Ann- I am very sorry for your loss. Continued prayers for all of you during this difficult time.

Joan - February 21, 2019 at 03:55 PM

GP

“ Theresa and Family, so sorry for your loss. I went to elementary and Jr High School with Kray. In 6th grade he was my pen pal when my family moved away for a year. A group of us would ride our bikes 2 miles into town almost every day during the summers to hang out together and not get into too much mischief. May the good memories carry you through this hard time.

Geri Pool - February 20, 2019 at 11:40 PM

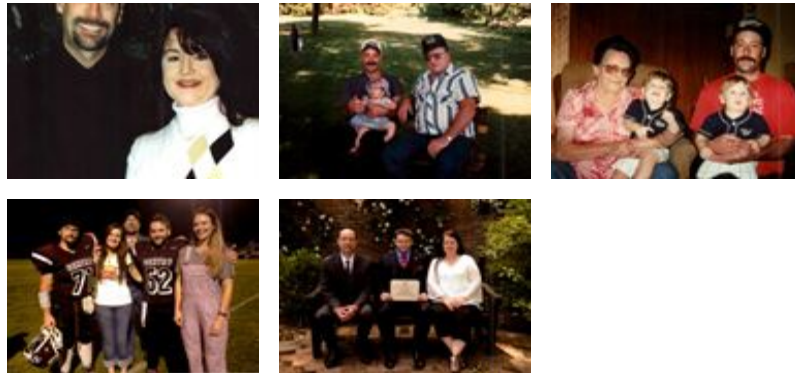
JW

Theresa, I was so sorry to hear of Kray's passing. We went to school together in Milroy. I have wonderful memories of Kray. He always knew how to cheer people up. And had a kind heart! Lots of love and prayers to you and your family during this difficult time ❤️❤️

Janet welu - February 21, 2019 at 06:53 PM



“ 55 files added to the album *Life Tributes*



**Wasson Funeral Home** - February 19, 2019 at 01:33 PM



“ *Theresa & Family, we are so very sorry for your loss. You and your whole family will be in our prayers and you walk through this difficult time. God BLESS each of you, with His strength & peace during the days & years ahead.*

**Irene & Jim Roberts** - February 19, 2019 at 12:35 PM



“ *We are so sad to hear about Kray passing. He was a special cousin and we have many happy memories of simpler times when we would visit Uncle Kenny & Rae Ann on their farm.*

*Keeping you in our thoughts and prayers as you celebrate Kray's life.*

**Stacy & Sherri** - February 18, 2019 at 12:49 PM

SF

“ *Stacy Lundberg, Sherri Swalinkavich & families purchased the Basket Full of Wishes for the family of Kray Barrie Flesner.*



---

**Stacy Lundberg, Sherri Swalinkavich & families** - February 18, 2019 at 12:45 PM



“ *Emerald Garden Basket was purchased for the family of Kray Barrie Flesner.*



---

February 18, 2019 at 11:54 AM

LG

“ *So sorry....I got to know Kray when we where at McKee it was so much fun watching Kray play basketball in the McKee league....he was a wonderful young man.....Lynne*

---

**Lynne Glass** - February 18, 2019 at 10:41 AM

LG

“ *Lynne Glass lit a candle in memory of Kray Barrie Flesner*



---

**Lynne Glass** - February 18, 2019 at 10:37 AM

PS

“ *Pipelife Jet Stream purchased the Emerald Garden Basket for the family of Kray Barrie Flesner.* ”



---

**Pipelife Jet Stream** - February 18, 2019 at 08:56 AM



“ *Ever Upward Bouquet was purchased for the family of Kray Barrie Flesner.* ”



---

February 17, 2019 at 06:20 PM

FF

“ *Teresa, so sorry to hear this, praying God will comfort you in this difficult time.* ”

---

**Flora Forrest** - February 17, 2019 at 03:35 PM